

# 7 Simple Steps to Independence.

## Car/Boat/RV Usage

After you are familiar with operating your Inogen One® G4 at home, you are ready to take your Inogen One® G4 on the road.

As always, be a careful driver. DO NOT RUSH OR HURRY to set up your Inogen One® G4 in the car. Take your time and follow the steps outlined to the right. The Inogen One® G4 can operate either by battery or the DC Power Cord while in your car, boat, or RV.

### CAUTION

Make sure your Inogen One® G4 is secure before driving.



Plug the DC Power cord into the cigarette lighter or auxiliary DC power supply.



Plug the power output cord into your Inogen One® G4 and position your Inogen One® G4 securely inside the car. Operate your Inogen One® G4 and use normally.

INOGEN ONE<sup>G4</sup>



inogen



301 Coromar Dr,  
Goleta, CA 93117  
1-877-4-INOGEN (Toll Free)  
1-877-446-6436 (Toll Free)  
1-805-562-0515 (International)  
info@inogen.net  
[www.inogen.com](http://www.inogen.com)

Your Equipment Provider:

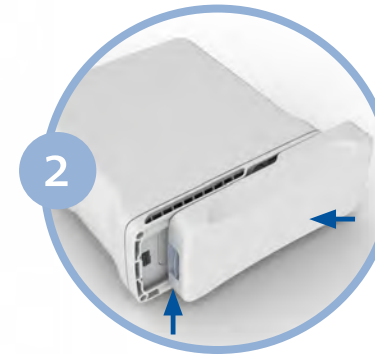
Your Physician:

# INOGENONE<sup>G4</sup>

Now that you have unpacked each box, you have everything you need to start using your Inogen One<sup>®</sup> G4 (IO-400). The set-up of your Inogen One<sup>®</sup> G4 is quick and simple. However, before using the Inogen One<sup>®</sup> G4, please read the entire User Manual.



1 Place your Inogen One<sup>®</sup> G4 in a well ventilated location. Ensure the particle filter is in place.



2 Insert the Inogen One<sup>®</sup> G4 battery by sliding battery into place until the latch returns to the upper position.



3 Connect the AC input plug to the power supply, connect the power output plug to the Inogen One<sup>®</sup> G4.




4 Plug the power supply AC cord into the nearest electrical outlet.



5 Connect the nasal cannula tubing into the metal nozzle on your Inogen One<sup>®</sup> G4. Oxygen will only be delivered while you are breathing through the nasal cannula connected to the device.



6 Turn on the Inogen One<sup>®</sup> G4 by pressing  the on/off button.



7 Set the flow setting to the flow rate prescribed by your clinical professional. The flow setting can be changed by pressing the circular flow setting buttons that are marked with “+” and “-” symbols. Position the nasal cannula on your face and breathe normally through your nose.

